

# Multiuser GME

## 1. Prerequisites

- GME 5.11.18 or later
- Microsoft Visual SourceSafe or Rational ClearCase client if using GME's built in source control mechanisms.

## 2. Creating a multiuser project

- Start GME, then File/New Project, select paradigm
- When it asks for the backend select "Create multi user project"
- Fill in the Project Location and Project Name fields. GME will create a new folder named the same as the Project Name under the Project Location. For Rational ClearCase, the Project Location must be in a ClearCase dynamic view drive, but for Visual SourceSafe, it can be any normal folder.
- Select source control. If "None" is selected gme will store the project in XML files but those files will not be under source control. Use this method if you want to use another source control service such as CVS. Then check the files in and out of your source control server separately from GME.
- If using Visual SourceSafe, fill in the SourceSafe Database and SourceSafe Project fields. In the SourceSafe Database field, the full path of the srcsafe.ini file must be specified. The SourceSafe Database must reside in a network path that looks identical on all client machines, otherwise other clients will not find the database. In the SourceSafe Project, a parent project must be specified. A new project will be created under that parent with the given Project Name. VSS project paths always begin with \$. Eg.: \$/projects or \$/

**New Multiuser Project**

Project Location: C:\projects\gmetest

Project Name: test1

Source control

Visual SourceSafe  Rational ClearCase  None

Visual SourceSafe

SourceSafe: \\NetworkDrive\SourceSafeDBFolder\srcsafe.ini

SourceSafe Project (parent):  
Eg.:\$/projects: \$/

OK Cancel

- GME will ask for the VSS username and password you will use to login to the Visual SourceSafe database.
- If using Rational ClearCase, the Project Location must be a ClearCase controlled dynamic view drive. All users have to use the same dynamic view.
- To import an existing GME project, the project should be exported to XML, and then imported back to a newly created multi user project.
- We are done; the multi user project is created and controlled via source control. Again, it is important to note that the path to the VSS database look identical on each machine, since it is stored in a config file with the XML files in the project folder.

### 3. Joining a multiuser project

- If using Visual SourceSafe, the user will have to get the project files from the database using the VSS client program. It has to be done only once; after that GME will handle VSS operations.
- If using Rational ClearCase, the user only needs to open the project from the dynamic view drive.

#### **4. Opening a multiuser project**

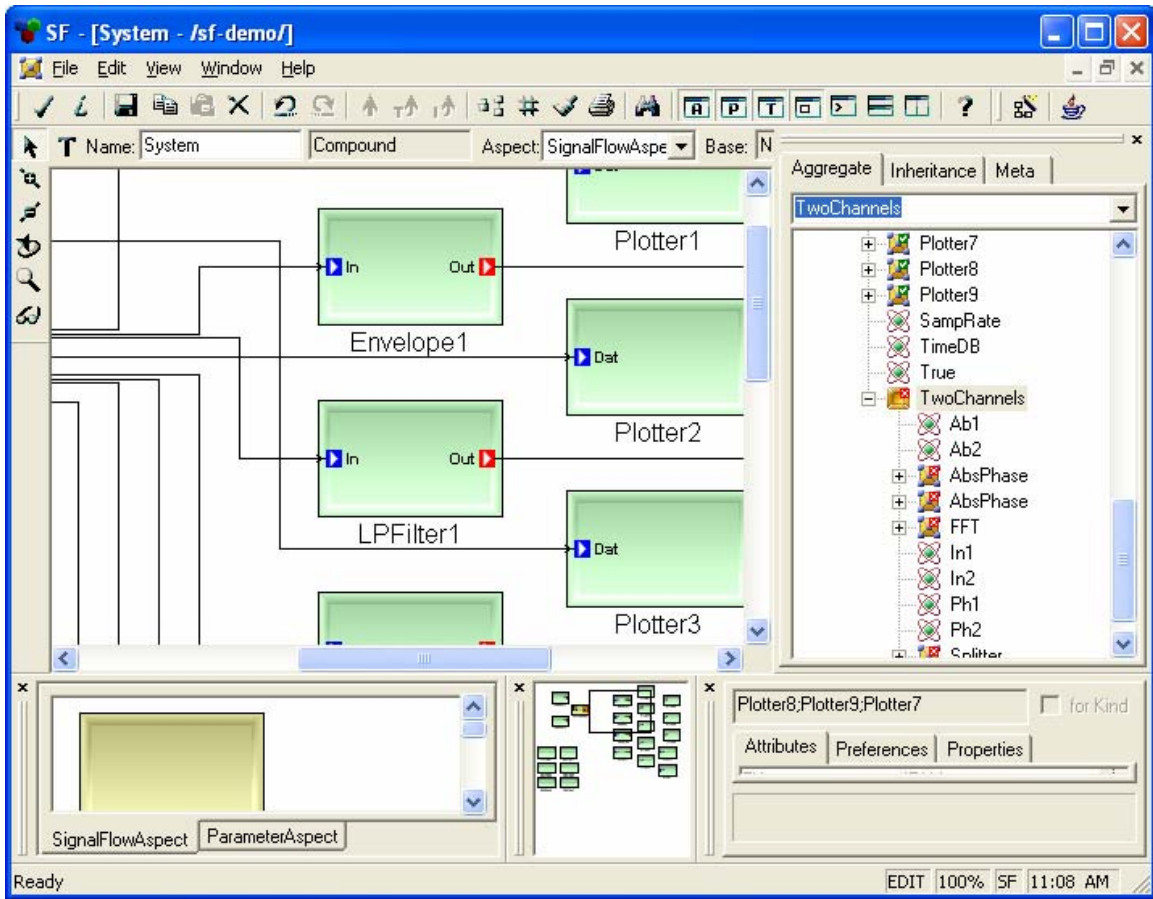
- Start GME, then File/Open Project/Open multi user project
- Select the folder which contains the project
- If the project is under Visual SourceSafe, GME will ask for the username and password to login to the VSS database

#### **5. Saving a project**

- After the project is saved, files will be checked in and the user will be asked whether to keep files checked out or not. Keeping the files checked out will keep the locks on them so other engineers will not be able to edit the GME objects you are currently working on. If you opt not to keep the files checked out, the locks will be released so that any other user may edit any part of this model.

#### **6. Viewing/Editing multiuser projects**

- Once a multiuser project is opened, GME can be used as normal with the following exceptions:
  - If you are making a modification, GME tries to check out the necessary XML files from source control. If it can check out all the necessary files, the operation will be done. If one or more files are checked out by other users, GME will roll back the operation and notify you.
  - Clicking on View/Refresh SourceControl Status will cause GME's tree browser to display Green checkmarks on the objects you have checked out, and red X marks on the objects other users have checked out.



- When the project is closed GME saves the project (see section 5).